

CAPITAL CONSTRUCTION PROGRAM UPDATE

Bern Seals
Program Manager
Parsons Management Consultants

JUNE 2012

DISCUSSION AGENDA

Program Safety Performance

2012 Significant Construction Projects Update

- DCA
- IAD

CAPITAL CONSTRUCTION PROGRAM SAFETY PERFORMANCE

2012 TO DATE*:

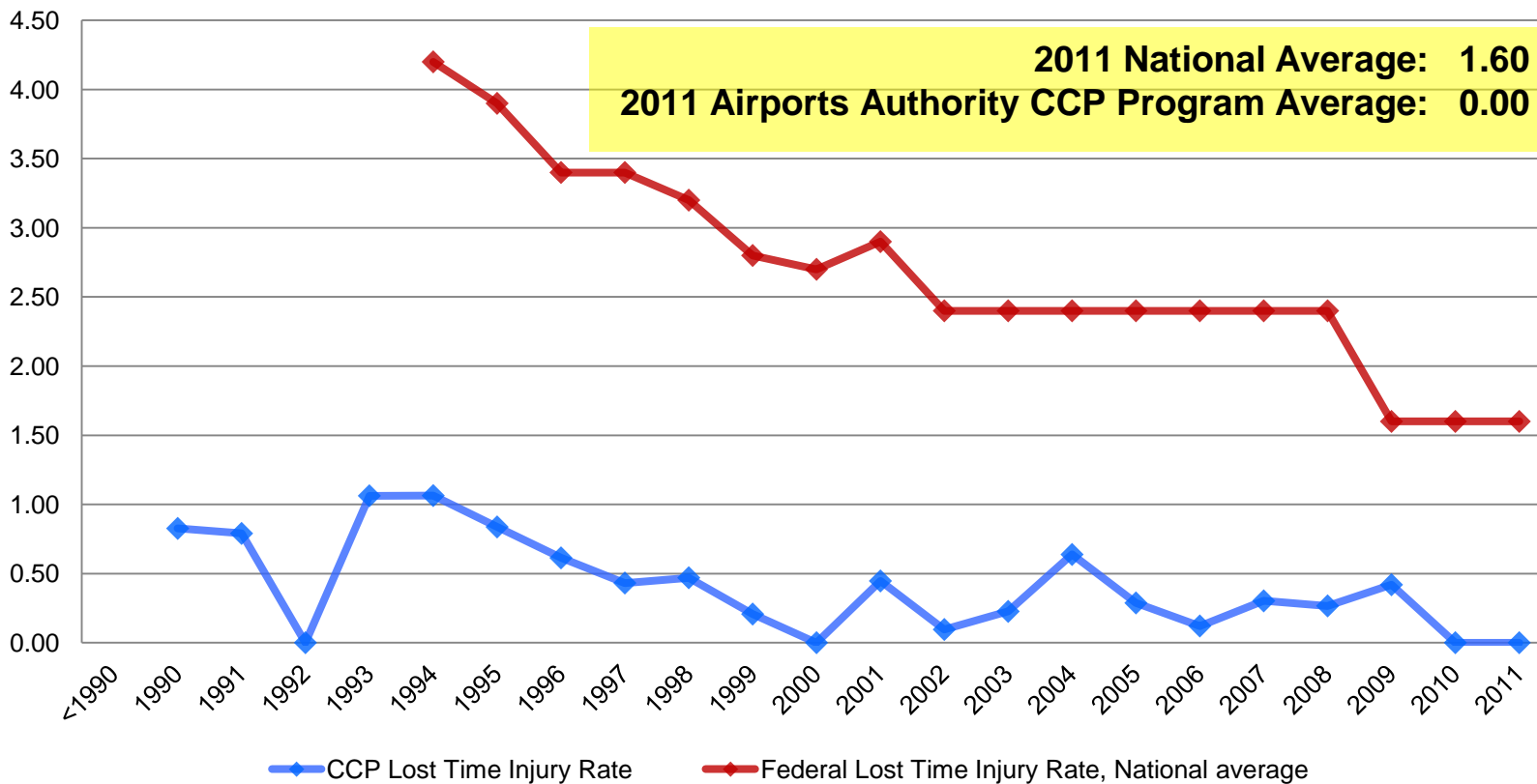
Labor Hours Worked	=	140,630
Recordable Incident Rate (RIR)	=	1.4
National Avg. RIR for Industry	=	3.8
Lost Time Injury Rate (LTIR)	=	0
National Average LTR	=	2.2

*Through end of April 2012



CAPITAL CONSTRUCTION PROGRAM SAFETY PERFORMANCE

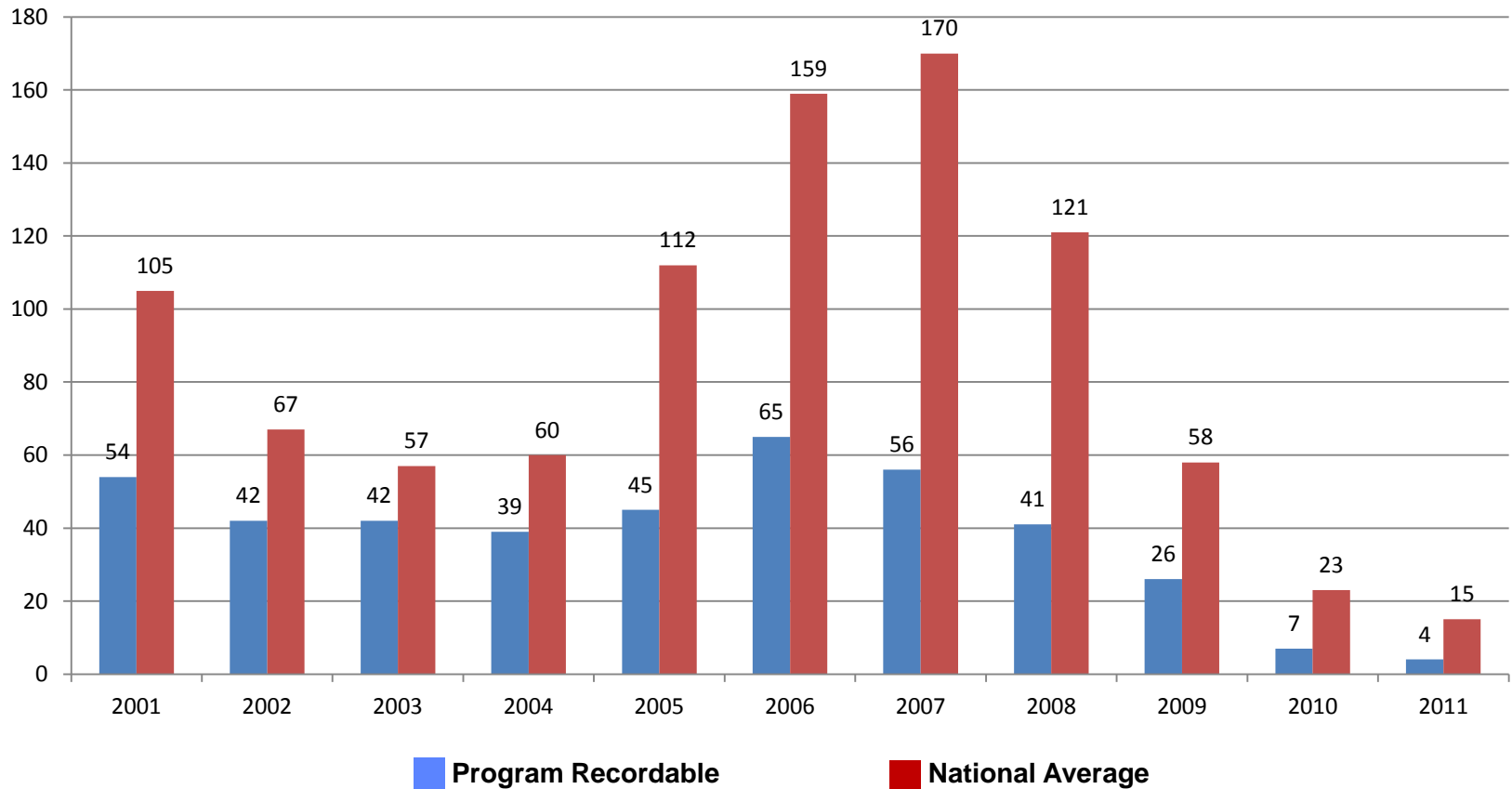
CCP Lost Time Injury Rate vs. National Average





CAPITAL CONSTRUCTION PROGRAM

Actual number of recordable injuries compared to National Average



Note: Authority Program and National Recordable rates are calculated using same formula



METROPOLITAN WASHINGTON AIRPORTS AUTHORITY



RONALD REAGAN WASHINGTON NATIONAL AIRPORT (DCA)



DCA 2012 CCP

DCA DFS Hydraulic Work

Additional Deck for
Garages A and B/C

Terminal A Building
Rehabilitation

DCA Power Distribution

Runway 1-19 Safety
Area/Hold Apron
General Package

Runway 1-19 Safety Area
Early Utilities Package

Runway Overlay – Runway
15-33 & Taxiway J

Runway 1-19 Overlay and
Taxiway Rehabilitation

Runway 4-22 Runway
Safety Area

River Rescue Facility

Runway 15-33 Runway
Safety Area

TV-900 Blast Fence for
Runway 1-19

ALSF-2 for Runway 1-19



Design

Construction

Complete

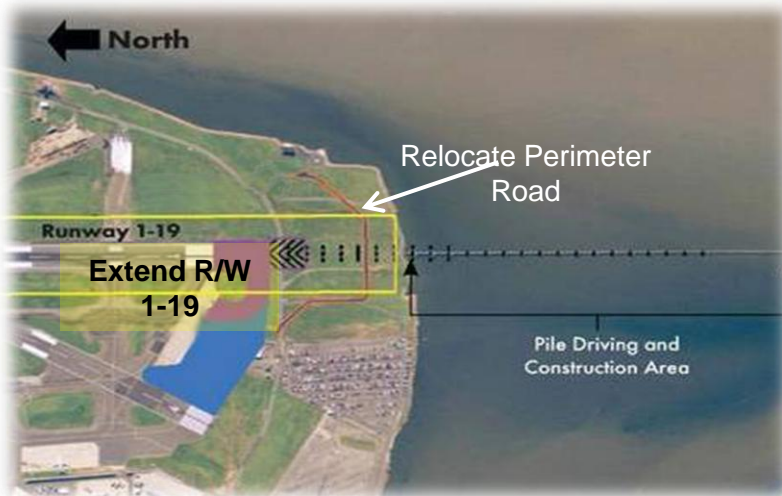
RUNWAY 1-19 RUNWAY SAFETY AREA IMPROVEMENTS AND HOLD APRON GENERAL CONSTRUCTION PACKAGE

Scope includes Runway Safety Area (RSA) construction for Runway 1-19, extension of Taxiway J, relocation of the airport perimeter road, modifications to FAA navigation and lighting systems, and Hold Apron 1 expansion.

Contractor is completing the work required for runway extension commissioning by 5/31/12.

Runway night closures will continue as needed to support installation and testing of navigation aids and final electrical work.

Final construction completion is forecasted to occur July 2012.



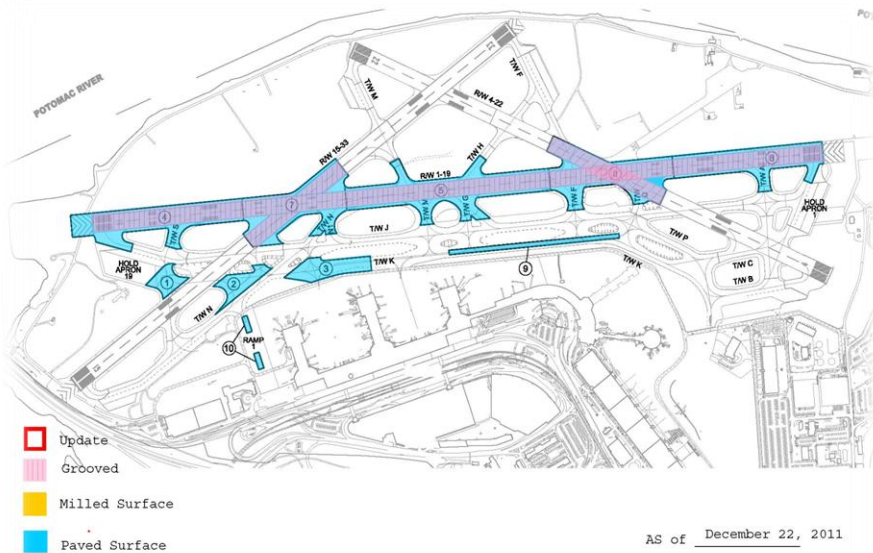


RUNWAY 1-19 OVERLAY AND TAXIWAY REHABILITATION

Scope includes construction of Runway 1-19 and associated taxiway asphalt overlays and repairs, and restores the Runway 19 RSA.

Base contract completion was achieved on schedule in December 2011.

Change Order work for runway touchdown zone lights concluded in April 2012.





APPROACH LIGHTING SYSTEM WITH SEQUENCED FLASHERS 2 (ALSF2) CONSTRUCTION FOR RUNWAY 1-19

Scope includes a new ALSF2 lighting system and shelter.

Ductbank construction is being performed during the day when access to the glide slope critical area is approved by Operations and the FAA.

Substantial Completion is forecast for July 2012.





TV-900 BLAST FENCE CONSTRUCTION FOR RUNWAY 1-19

Scope includes a new blast fence to protect Transformer Vault 900 to include foundations and minor electrical modifications.

Contractor has completed the electrical punch list work and a final inspection will be scheduled.

Substantial Completion was achieved in March 2012.





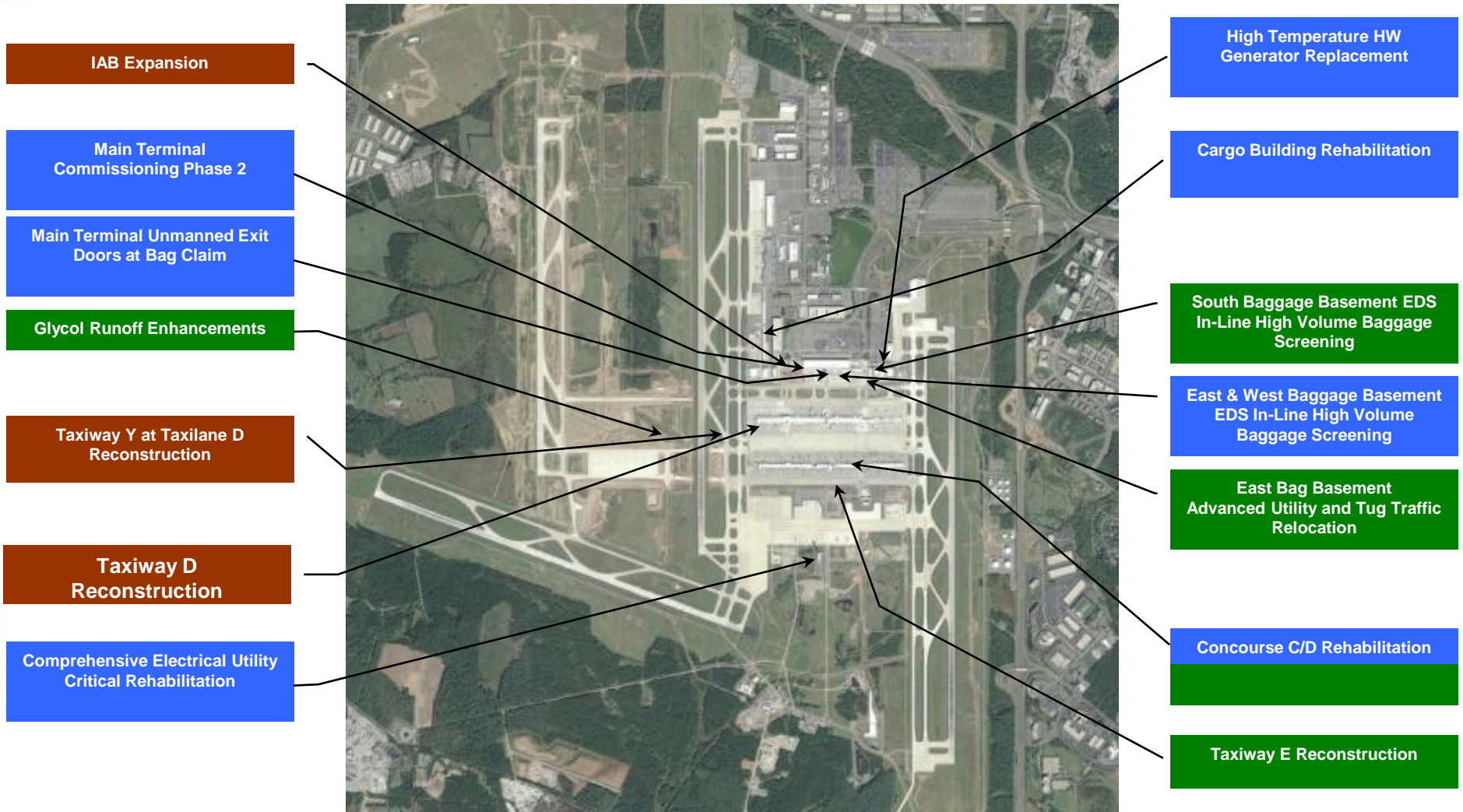
METROPOLITAN WASHINGTON AIRPORTS AUTHORITY

WASHINGTON DULLES INTERNATIONAL AIRPORT (IAD)





IAD 2012 CCP



Design

Construction

Complete

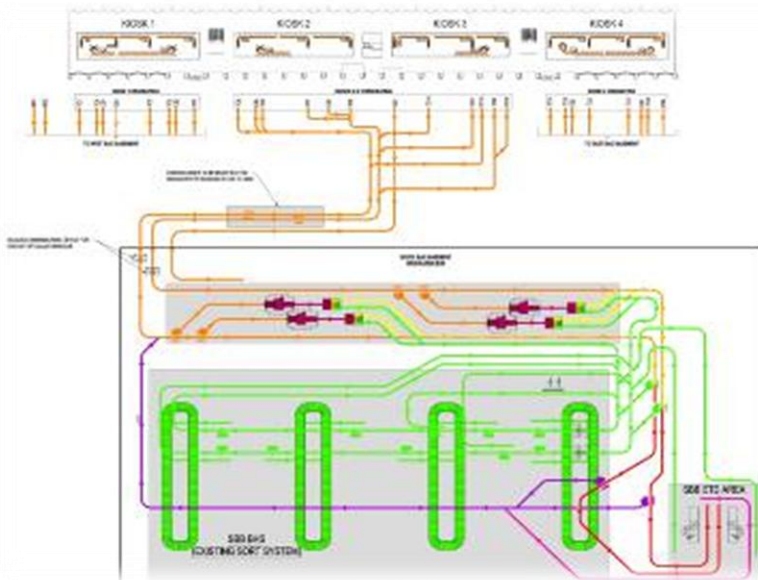


SOUTH BAGGAGE BASEMENT EDS IN-LINE HIGH VOLUME BAGGAGE SCREENING

Scope includes In-line Explosive Detection System (EDS) baggage screening operation, conveyance system build-out, and utility modifications.

Substantial Completion was achieved by Contractor in January 2012.

Punch List and certification testing is on-going.





**SOUTH BAGGAGE BASEMENT
EDS IN-LINE HIGH VOLUME BAGGAGE SCREENING**



METROPOLITAN WASHINGTON AIRPORTS AUTHORITY

SOUTH BAGGAGE BASEMENT EDS IN-LINE HIGH VOLUME BAGGAGE SCREENING





METROPOLITAN WASHINGTON AIRPORTS AUTHORITY

SOUTH BAGGAGE BASEMENT EDS IN-LINE HIGH VOLUME BAGGAGE SCREENING





**SOUTH BAGGAGE BASEMENT
EDS IN-LINE HIGH VOLUME BAGGAGE SCREENING**

EAST BAGGAGE BASEMENT ADVANCE UTILITY AND TUG TRAFFIC RELOCATION

Scope provides relocation of existing utilities, baggage systems, and tug roadways in order to clear area for construction of the East Baggage Basement In-line High Volume Explosive Detection System project.

Substantial Completion was achieved by Contractor in April 2012.

Work continues on punch list and project close-out documents.





METROPOLITAN WASHINGTON AIRPORTS AUTHORITY

EAST BAGGAGE BASEMENT ADVANCE UTILITY AND TUG TRAFFIC RELOCATION





**EAST BAGGAGE BASEMENT
ADVANCE UTILITY AND TUG TRAFFIC RELOCATION – PHASE 2**



**EAST BAGGAGE BASEMENT
ADVANCE UTILITY AND TUG TRAFFIC RELOCATION – PHASE 2**



**EAST BAGGAGE BASEMENT
ADVANCE UTILITY AND TUG TRAFFIC RELOCATION - PHASE 2**



TAXILANE E REHABILITATION

Scope rehabilitates portions of Taxilane E and Concourse C/D Apron. Work includes concrete pavement demolition, excavation, backfill, soil stabilization, concrete panel replacement, crack sealing and pavement marking.

Project contains multiple phases to accommodate United operations and needs at Concourse C/D gates.

Substantial Completion is forecast in June 2012.





GLYCOL RUNOFF ENHANCEMENTS

Project provides improved collection system for glycol used in deicing operations.

Scope includes a reinforced concrete weir structure with associated pumps, electric feeders and controls, and piping, as well as modifying two existing manhole structures to accommodate installation of equipment.

Contractor continues work on final grading, seeding, and punch list items.

Substantial Completion is forecast in May 2012.





CONCOURSE C/D REHABILITATION RESTROOMS AND SWITCHBACKS

Scope provides interior improvements for Concourse C/D Restrooms and gate Switchbacks.

Contractor continues with the installation of wall and floor tile and is commencing installation of plumbing in the first of six phases of restrooms.

Substantial Completion is forecast in July 2013.



CONCOURSE C/D PASSENGER BOARDING BRIDGE IMPROVEMENTS

Scope removes two inoperable Passenger Boarding Bridges (PBBs), refurbishes five PBBs in place, refurbishes and installs two stored PBBs, at Concourse C/D to improve gate capacity. Work includes improving preconditioned air and ground power units on various Concourse C/D PBBs.

Substantial Completion is forecast in July 2013.





METROPOLITAN WASHINGTON
AIRPORTS AUTHORITY